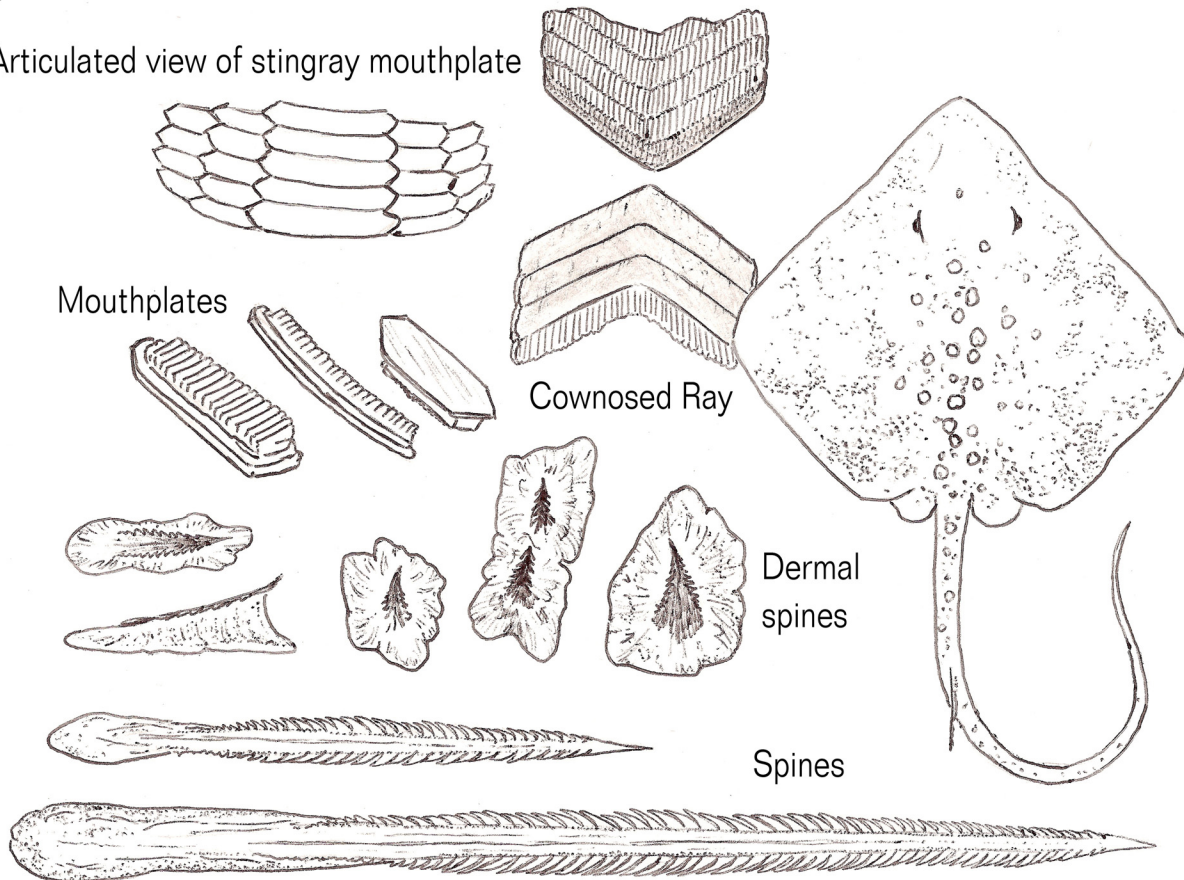


Florida Fossil Hunters ID Sheet

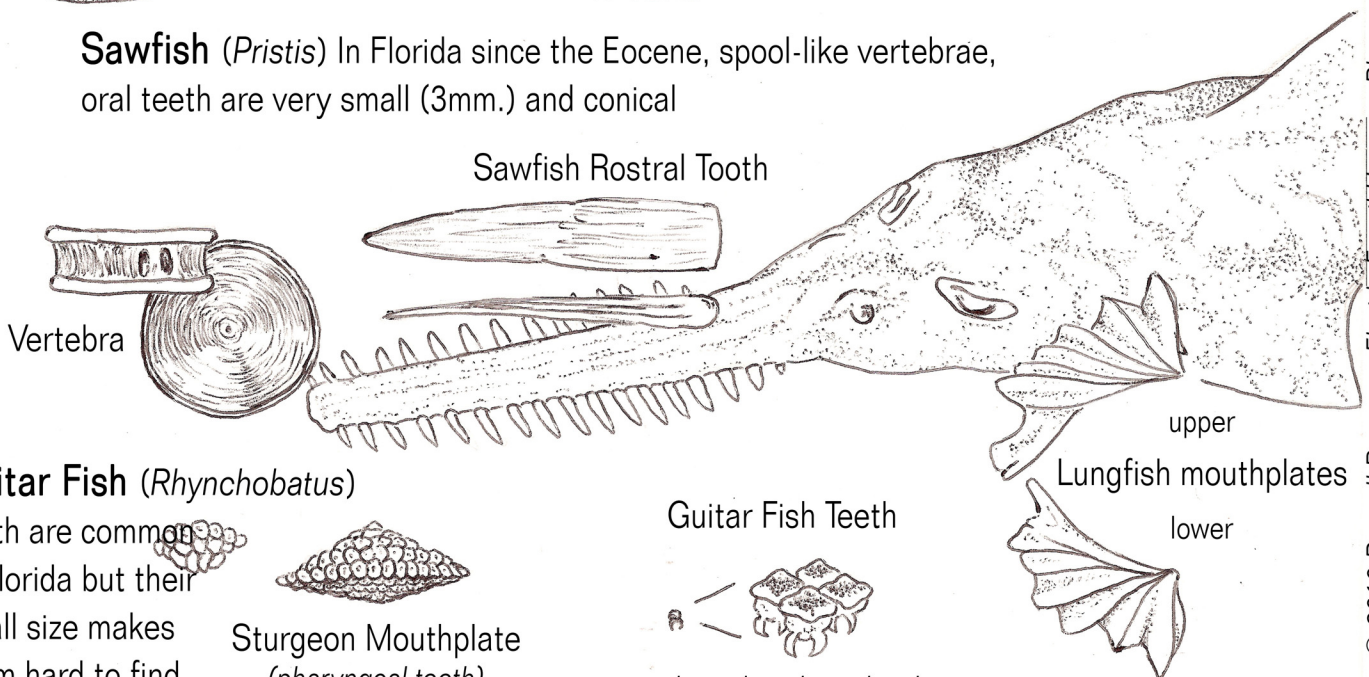
Batooids - Rays, Skates, Sawfishes

Rays are related to sharks and do not have a hard skeleton. We do find their fossilized vertebrae, enlarged dermal denticles that form spines, and pieces of mouthplates. They use these plates to crunch shrimp and crustaceans. Since they usually live along coasts and in estuaries, their fossils are quite common in Florida.

Articulated view of stingray mouthplate



Sawfish (*Pristis*) In Florida since the Eocene, spool-like vertebrae, oral teeth are very small (3mm.) and conical



Guitar Fish (*Rhynchobatus*)

Teeth are common in Florida but their small size makes them hard to find.

