

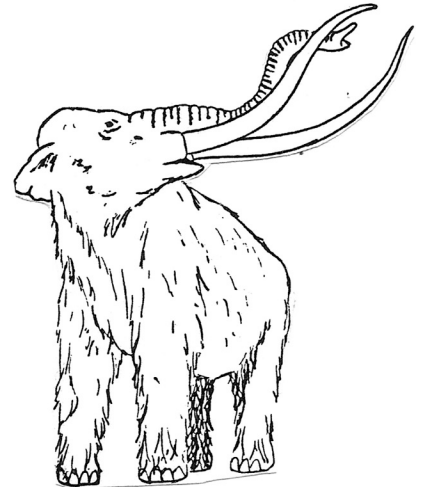
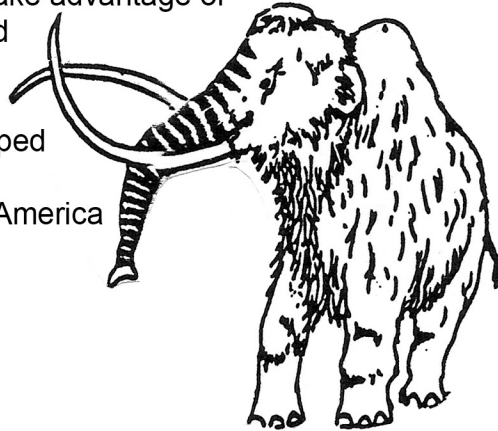
# Mammoth or Mastodon

## WHAT IS THE DIFFERENCE

### Proboscideans - Mastodons and Mammoths

Proboscideans originated in North Africa and spread from there. Their tusks are actually elongated incisors. The Mastodons arrived in North America 13 million years ago. They were browsers, feeding on the leaves, twigs and bark that were plentiful in the forests that covered North America at that time. As the climate changed, grasslands began to emerge.

The Mammoths evolved to take advantage of this food source. Their plated teeth enabled them to chew on the abrasive grass more efficiently than the cone-shaped teeth of the Mastodons. The mammoths arrived in North America around 2 million years ago.



#### MAMMOTH

*Mammuthus*

10 - 12 feet

6 - 8 tons

grazer

tundra, grasslands

#### MASTODON

*Mammut*

8 - 10 feet

4 - 6 tons

browser

forest, woodlands

Height/shoulder

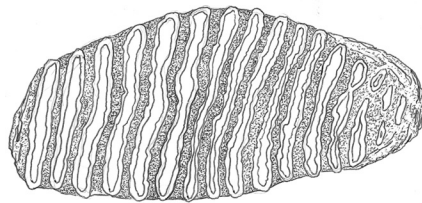
Weight

Foraging type

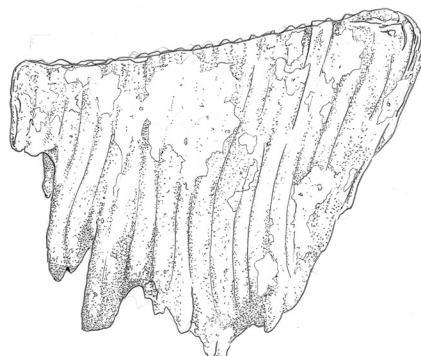
Habitats

#### Teeth

third molar  
(side view)



(top view)



crown

root

plate

cone

